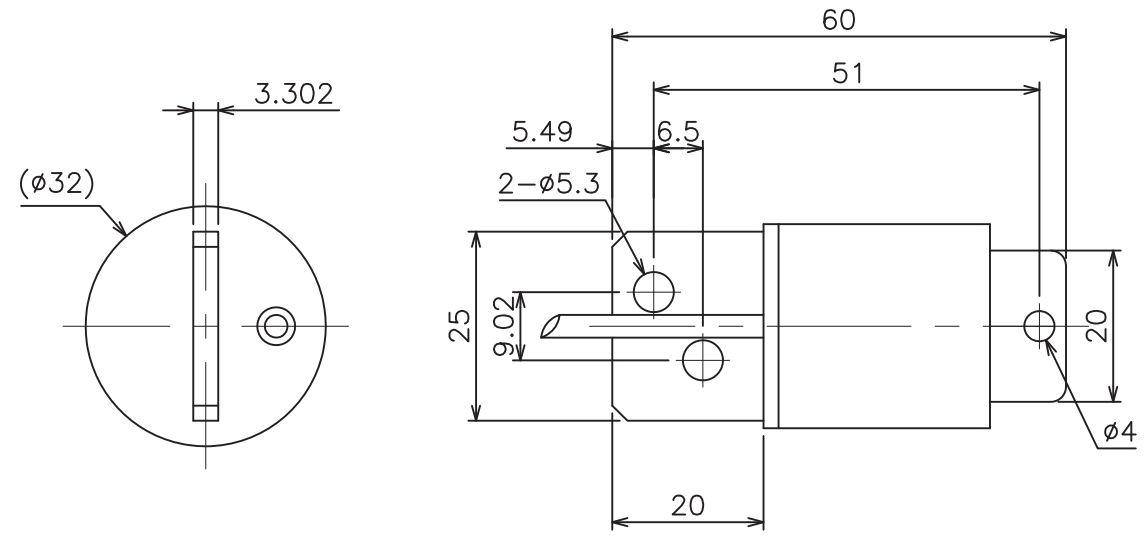


CASKOREA

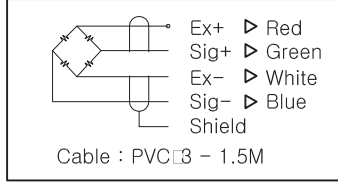
ALL INFORMATION IS UNCLASSIFIED UNLESS INDICATED OTHERWISE. THIS DOCUMENT IS UNCLASSIFIED UNLESS INDICATED OTHERWISE. THIS DOCUMENT IS UNCLASSIFIED UNLESS INDICATED OTHERWISE.

ALL INFORMATION IS UNCLASSIFIED UNLESS INDICATED OTHERWISE. THIS DOCUMENT IS UNCLASSIFIED UNLESS INDICATED OTHERWISE. THIS DOCUMENT IS UNCLASSIFIED UNLESS INDICATED OTHERWISE.

| | |
|----------------|----------------------|
| 지시외일반치수 허용치 | |
| 절삭가공부분 | |
| A | 구분 1급 |
| | 이상 |
| | 이하 |
| | 에서 |
| | 이하 |
| 용접구조물 (판금가공포함) | |
| C | 구분 보통급 |
| | 이하 |
| | 에서 |
| | 이하 |
| 지시외일반 모서리제거 | |
| D | 지시외용접치수 |
| E | 허가없이 복사할 수 없음 (취급주의) |
| F | |
| G | |
| H | |



| | | |
|------------------------------------|----------|--------------|
| Capacity(용량) | kgf | 50~200 |
| Rated Output(정격 출력) | mV/V | 2.0 Nominal |
| Zero Balance(무부하 범위) | mV/V | 0.0 ± 0.1 |
| Combined Error(종합 오차) | %RO | 0.03 |
| Repeatability(반복 출력 허용) | %RO | 0.1 |
| Creep for (30min)N분출력편차 | %RO | 0.03 |
| Temperature effect on(온도변화에 따른 범위) | | |
| Zero Value(영점값) | %RO/10°C | 0.03 |
| Output Value(출력값) | %RO/10°C | 0.03 |
| Excitation(인가전압) | | |
| Recommended(권고 전압) | V | 10 |
| Maximum(최대 전압) | V | 15 |
| Resistance(저항) | | |
| Input(입력저항) | Ω | 400±50 |
| Output(출력저항) | Ω | 350±3.5 |
| Insulation(절연저항) | MΩ | >2000@50V DC |
| Compensated Temp.Range | °C | -10 ~ +40 |
| Operating Temp.Range(작동범위) | °C | -20 ~ +80 |



| | | | | | |
|-------------|------------|-----------------|-----------------|----------|--|
| | | | | STANDARD | |
| APPROVE | | CASKOREA | | | |
| CHECKED | | | | | |
| DRAWN | | CUSTOMER | MATERIAL | | |
| DATE | 2018.07.24 | | Stainless steel | | |
| SCALE | o/o | TITLE | | | |
| | | ALPHA-200LCK | | | |
| PROJECT No. | | Subcontract | DWG No. | REV | |